

# EOS 306

## FLAT-TOP BARGE



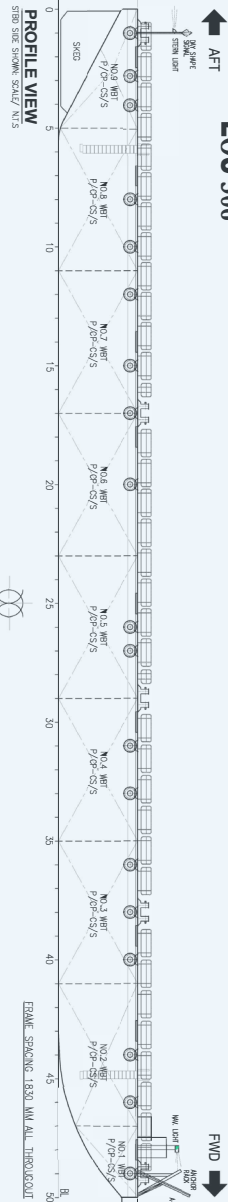
### PRINCIPAL PARTICULARS

YEAR BUILT	2012
PORT OF REGISTRY	Australia
CLASS	ABS/ + AI Barge
LENGTH OVERALL	91.44 m (300 ft)
BREADTH	30.48 m (100 ft)
DEPTH	6.096 m (20 ft)
DRAFT (SUMMER LOADLINE)	4.863 m
DEADWEIGHT	10,584 T
GRT / NRT	4,487 T / 1,346 T
DECK STRENGTH	15 T/m <sup>2</sup>
TRANSVERSE BULKHEAD	Eight (8)
LONGITUDINAL BULKHEAD	Three (3)

### DECK EQUIPMENT

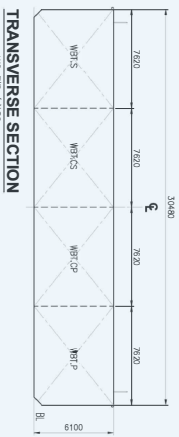
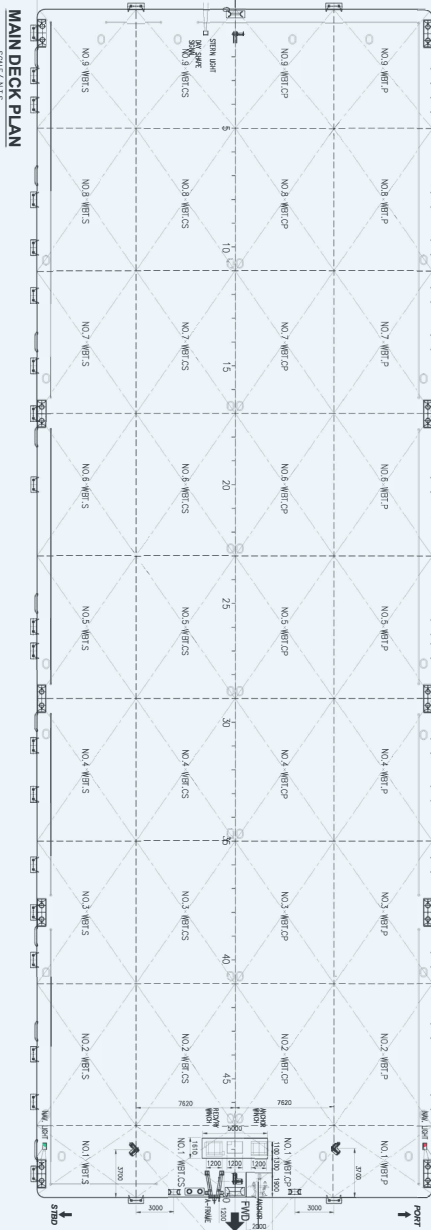
ANCHOR WINCH	1x Hydraulic Winch
ANCHOR	Stockless Anchor, 2280kg
SMIT BRACKETS	3x Forward, 2x Aft (Spare)
STANCHIONS	NA
MOORING BOLLARD	5x Deck type mooring bollards at Port 5x Deck type mooring bollards at Aft
RECOVERY WINCH	1x Hydraulic Winch at Forward
A-FRAME	1x Manual Winch at Aft 1x at Forward
OTHERS	Hand-rail fitted Tire Fenders

## GENERAL ARRANGEMENT PLAN for " EOS 306 "



**PRINCIPAL PARTICULARS**

LENGTH OVERALL — 91.500 M. (300'-00")  
 BREADTH MLD. — 30.480 M. (100'-00")  
 DEPTH MLD. — 6.100 M. (20'-00")  
 DRAFT MLD. — 4.863 M. (15'-11")  
 DECK LOAD — 15,000 TON/M<sup>2</sup>  
 CLASS NOTATION: ABS + AI, BARGE



NOTE:  
1. ALL DIMENSIONS ARE IN MM UNLESS INDICATED OTHERWISE.

NO.	DESCRIPTION	UNIT	QTY	REVISION HISTORY	DATE
1	100281 AS FITTED	MM	CT		
2	100282 UNPAINTED AS PER CORRECT LENGTH ONVAL	MM	CT		
3	100283 UNPAINTED AS PER FRAME POSITION LOCATION	MM	CT		
4	100284 UNPAINTED AS PER FRAME POSITION LOCATION	MM	CT		
5	100285 UNPAINTED AS PER FRAME POSITION LOCATION	MM	CT		
6	100286 UNPAINTED AS PER FRAME POSITION LOCATION	MM	CT		
7	100287 UNPAINTED AS PER FRAME POSITION LOCATION	MM	CT		
8	100288 UNPAINTED AS PER FRAME POSITION LOCATION	MM	CT		
9	100289 UNPAINTED AS PER FRAME POSITION LOCATION	MM	CT		
10	100290 UNPAINTED AS PER FRAME POSITION LOCATION	MM	CT		
11	100291 UNPAINTED AS PER FRAME POSITION LOCATION	MM	CT		
12	100292 UNPAINTED AS PER FRAME POSITION LOCATION	MM	CT		
13	100293 UNPAINTED AS PER FRAME POSITION LOCATION	MM	CT		
14	100294 UNPAINTED AS PER FRAME POSITION LOCATION	MM	CT		
15	100295 UNPAINTED AS PER FRAME POSITION LOCATION	MM	CT		
16	100296 UNPAINTED AS PER FRAME POSITION LOCATION	MM	CT		
17	100297 UNPAINTED AS PER FRAME POSITION LOCATION	MM	CT		
18	100298 UNPAINTED AS PER FRAME POSITION LOCATION	MM	CT		
19	100299 UNPAINTED AS PER FRAME POSITION LOCATION	MM	CT		
20	100300 UNPAINTED AS PER FRAME POSITION LOCATION	MM	CT		

1. THIS DRAWING IS THE PROPERTY OF EOS OIL SERVICES. IT IS TO BE USED ONLY FOR THE PROJECT AND VESSEL SPECIFICALLY IDENTIFIED HEREIN. IT IS NOT TO BE REPRODUCED, COPIED, OR TRANSMITTED IN ANY FORM OR BY ANY MEANS, ELECTRONIC OR MECHANICAL, INCLUDING PHOTOCOPYING, RECORDING, OR BY ANY INFORMATION STORAGE AND RETRIEVAL SYSTEM, WITHOUT THE WRITTEN PERMISSION OF EOS OIL SERVICES.

2. THE USER OF THIS DRAWING SHALL BE RESPONSIBLE FOR THE ACCURACY OF THE INFORMATION PROVIDED HEREIN. EOS OIL SERVICES ACCEPTS NO LIABILITY FOR THE USE OF THIS DRAWING FOR ANY OTHER PURPOSE.

3. ANY CHANGES TO THIS DRAWING SHALL BE APPROVED BY THE SIGNATURE OF THE DESIGNER AND APPROVED BY THE CLIENT.

4. THIS DRAWING IS THE PROPERTY OF EOS OIL SERVICES. IT IS TO BE USED ONLY FOR THE PROJECT AND VESSEL SPECIFICALLY IDENTIFIED HEREIN. IT IS NOT TO BE REPRODUCED, COPIED, OR TRANSMITTED IN ANY FORM OR BY ANY MEANS, ELECTRONIC OR MECHANICAL, INCLUDING PHOTOCOPYING, RECORDING, OR BY ANY INFORMATION STORAGE AND RETRIEVAL SYSTEM, WITHOUT THE WRITTEN PERMISSION OF EOS OIL SERVICES.

5. ANY CHANGES TO THIS DRAWING SHALL BE APPROVED BY THE SIGNATURE OF THE DESIGNER AND APPROVED BY THE CLIENT.

PROJECT TITLE: Marine Transportation of Offshore Pipe Lines

**EOS** 1. SHARONBURY AVENUE,  
 #04-113 SINGAPORE, SINGAPORE  
 TEL: (65) 6545 5211  
 FAX: (65) 6545 5211

DESIGN TITLE: GENERAL ARRANGEMENT PLAN

BARGE - EOS 306

EOS-ENG-306-142

DATE	1	2	3	4	5
REV	1	1	1	1	5

Vessel particulars are believed to be correct but are not guaranteed. Owners reserve the rights to amend the specifications without notification. Particulars are entirely without warranty as to correctness. Interested parties must inspect vessel's certificates, drawings or conduct a physical inspection of vessel.