

M3301

FLAT TOP DECK CARGO BARGE

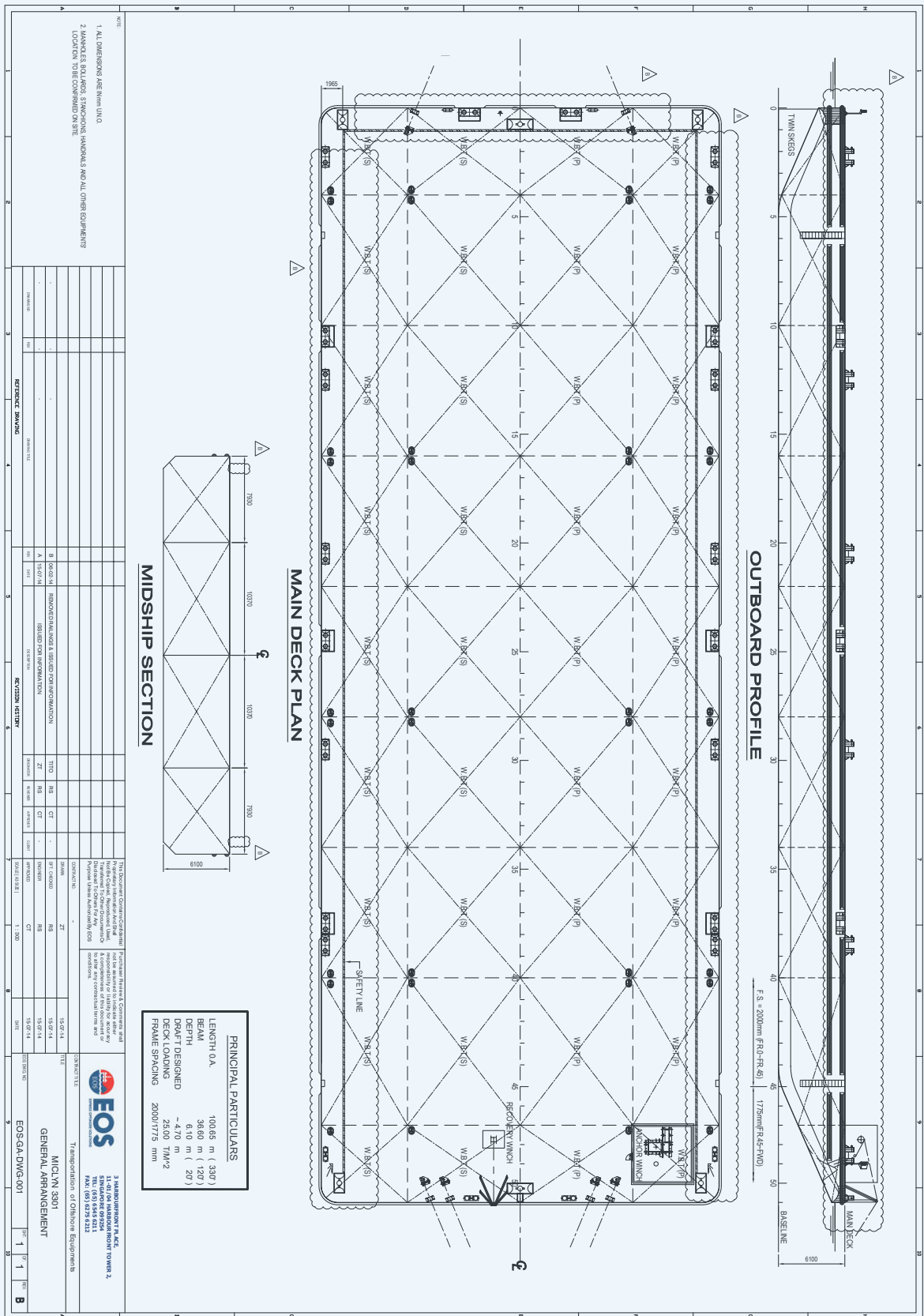


PRINCIPAL PARTICULARS

YEAR BUILT	2013
PORT OF REGISTRY	Singapore / Singapore
OFFICIAL NUMBER	398470
CLASS	Bureau Veritas
LENGTH OVERALL	100.65 m (330 ft)
BREADTH	36.60 m (120 ft)
DEPTH	6.10 m (20 ft)
DRAFT LOADED	4.71 m
DECK STRENGTH	25 T/m ²
GRT / NRT	5,959T / 1,787 T
DEADWEIGHT	12964 T
TRANVERSE BULKHEAD	Eight (8)
LONGITUDINAL BULKHEAD	Three (3)

DECK EQUIPMENT

ANCHOR WINCH	1 x 15 t capacity electric (Diesel Driven)
ANCHOR SMIT BRACKETS	1 x 2,200 kg stockless bower 2 x smit towing brackets - P&S, fwd and aft
STANCHIONS	NIL
NAVIGATION LIGHTS	1 set solar type, P&S at fwd and aft
MOORING BOLLARD	10 of 14" N.B. (recessed)
OTHERS	Barge is all welded steel construction with flush main deck, twin skegs and swim-ended on stern and stem.



Vessel particulars are believed to be correct but are not guaranteed. Owners reserve the rights to amend the specifications without notification. Particulars are entirely without warranty as to correctness. Interested parties must inspect vessel's certificates, drawings or conduct a physical inspection of vessel.