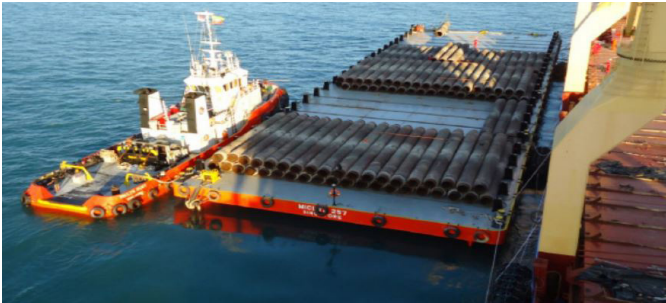


MICLYN 257



FLAT TOP DECK CARGO BARGE

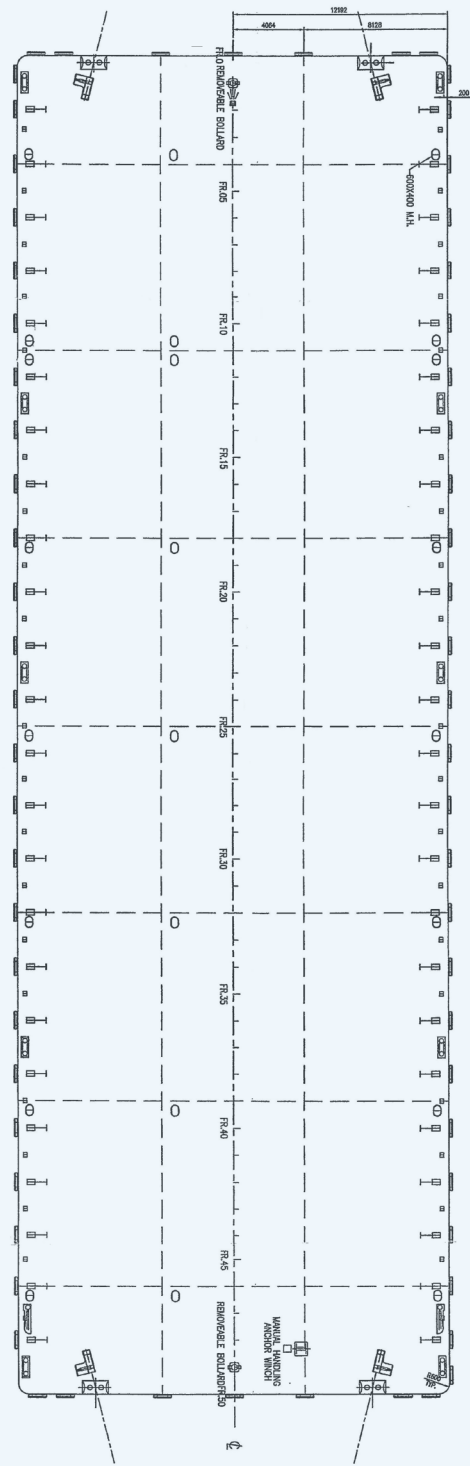
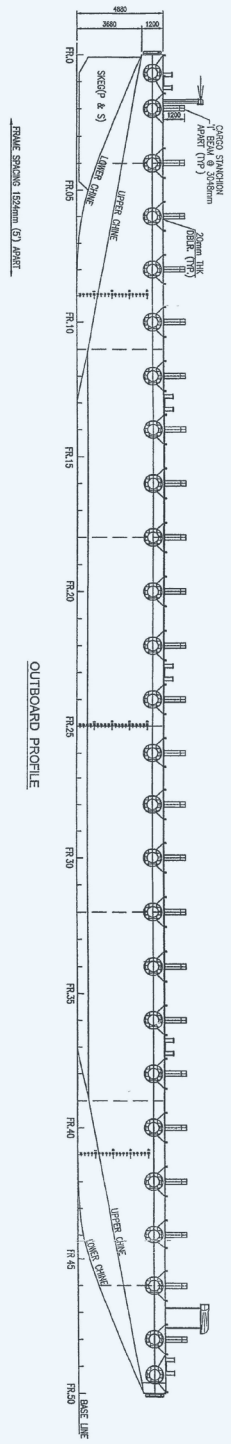


PRINCIPAL PARTICULARS

YEAR BUILT	2007
PORT OF REGISTRY	Indonesia
OFFICIAL NUMBER	392595
CLASS	Bureau Veritas
LENGTH OVERALL	76.20 m (250 ft)
BREADTH	24.38 m (80 ft)
DEPTH	4.88 m (16 ft)
DRAFT LOADED	3.90 m
DECK STRENGTH	15 T/m ²
GRT / NRT	2,220 T / 666 T
DEADWEIGHT	5,089 T
TRANVERSE BULKHEAD	Seven (7)
LONGITUDINAL BULKHEAD	TWO (2)

DECK EQUIPMENT

ANCHOR WINCH	1 x hand winch
ANCHOR	1 x 1,000 kg stockless bower anchor
SMIT BRACKETS	4 x smit towing brackets - P&S, fwd and aft
STANCHIONS	23 stanchions with stay on each side
NAVIGATION LIGHTS	1 set solar type, P&S at fwd and aft
MOORING BOLLARD	4 sets double mooring bollards each side (deck)
OTHERS	Barge is all welded steel construction with flush Main Deck and Twin Skegs. Hand driven bridle recovery winches (2) fwd / aft



MAIN DECK PLAN

PRINCIPAL DIMENSIONS

LENGTH OVERALL 79.200 M (259'-6")
 BREADTH MOLDED 24.384 M (79'-9")
 DEPTH MOLDED 4.880 M (16'-0")
 DRAFT MOLDED 3.800 M (12'-6")
 DECK LOADING 15 MT/M²

GENERAL ARRANGEMENT

NO.	DESCRIPTION	DATE	REVISION
0	REV. CLASS APPROVAL	2018	01
1	REV. GENERAL ARRANGEMENT	2018	01
2	REV. GENERAL ARRANGEMENT	2018	01

THIS DRAWING IS THE PROPERTY OF ABS. IT IS TO BE USED ONLY FOR THE PROJECT AND VESSEL SPECIFICALLY IDENTIFIED HEREIN. IT IS NOT TO BE REPRODUCED, COPIED, OR TRANSMITTED IN ANY FORM OR BY ANY MEANS, ELECTRONIC OR MECHANICAL, INCLUDING PHOTOCOPYING, RECORDING, OR BY ANY INFORMATION STORAGE AND RETRIEVAL SYSTEM, WITHOUT THE WRITTEN PERMISSION OF ABS.

GENERAL ARRANGEMENT

NO.	DESCRIPTION	DATE	REVISION
0	REV. CLASS APPROVAL	2018	01
1	REV. GENERAL ARRANGEMENT	2018	01
2	REV. GENERAL ARRANGEMENT	2018	01



Vessel particulars are believed to be correct but are not guaranteed. Owners reserve the rights to amend the specifications without notification. Particulars are entirely without warranty as to correctness. Interested parties must inspect vessel's certificates, drawings or conduct a physical inspection of vessel.