

# MICLYN 258



## FLAT TOP DECK CARGO BARGE



### PRINCIPAL PARTICULARS

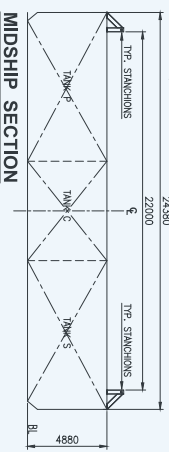
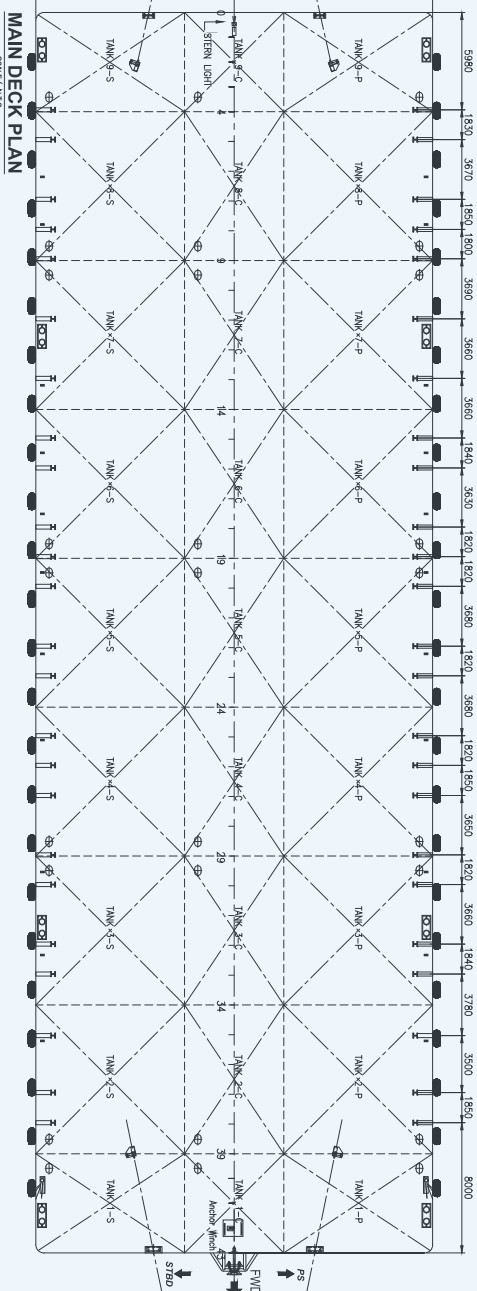
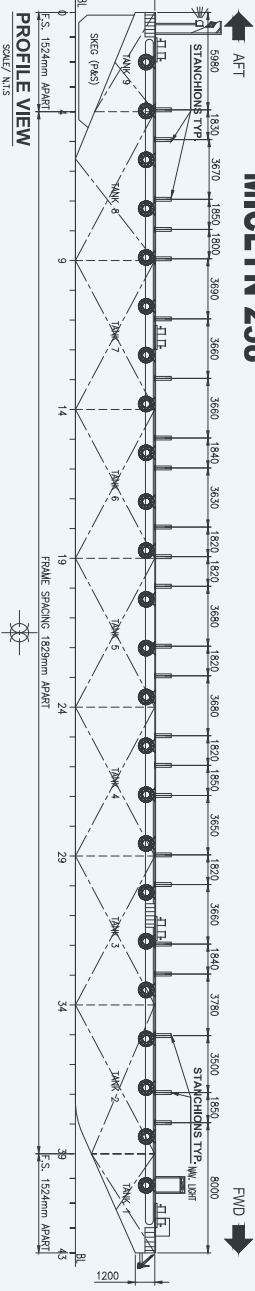
YEAR BUILT	2007
PORT OF REGISTRY	Singapore
OFFICIAL NUMBER	393893
CLASS	Bureau Veritas
LENGTH OVERALL	76.20 m (250 ft)
BREADTH	24.38 m (80 ft)
DEPTH	4.88 m (16 ft)
DRAFT LOADED	3.79 m
DECK STRENGTH	15 T/m <sup>2</sup>
GRT / NRT	2,257 T / 677 T
DEADWEIGHT	5,300 T (Approx)
TRANVERSE BULKHEAD	Eight (8)
LONGITUDINAL BULKHEAD	Two (2)

### DECK EQUIPMENT

ANCHOR WINCH	1 x hand winch (200 m x 1" galvanized wire)
ANCHOR SMIT BRACKETS	1 x 1,000 kg stockless bower anchor 4 x smit towing brackets - P&S, fwd and aft
STANCHIONS	24 stanchions (P&S)
NAVIGATION LIGHTS	1 set solar type, P&S at fwd and aft
MOORING BOLLARD	4 sets double mooring bollards each side (deck)
OTHERS	Barge is all welded steel construction with flush Main Deck and Twin Skegs.

# GENERAL ARRANGEMENT PLAN for

## " MICLYN 258 "



NOTE:  
 1. ALL DIMENSIONS ARE IN MM UNLESS INDICATED OTHERWISE.  
 2. REFER TO " EXTERNAL TYP-STANCHION DETAIL " BY MANULING RINA SHIPBUILDING ENGINEERING COMPANY LTD.

NO.	DESCRIPTION	DATE	BY	CHECKED	APPROVED
1	ISSUED FOR PERMIT COMMENTS				
2	ISSUED FOR PERMIT COMMENTS				
3	ISSUED FOR PERMIT COMMENTS				
4	ISSUED FOR PERMIT COMMENTS				
5	ISSUED FOR PERMIT COMMENTS				
6	ISSUED FOR PERMIT COMMENTS				
7	ISSUED FOR PERMIT COMMENTS				
8	ISSUED FOR PERMIT COMMENTS				
9	ISSUED FOR PERMIT COMMENTS				
10	ISSUED FOR PERMIT COMMENTS				

**PRINCIPAL PARTICULARS**  
 LENGTH OVERALL - 76.20 M. (250'-00")  
 BREADTH MLD. - 24.38 M. (80'-00")  
 DEPTH MLD. - 4.88 M. (16'-00")  
 DRAFT MLD. - 3.80 M. (12'-6")  
 DECK LOAD - 15.00 TON/M2  
 CLASS NOTATION: ABS + A1 TANK BARGE

3 LABORATORY PLATE  
 BREATHING APPARATUS  
 SIMULATOR 099254  
 TEL: (051) 8245 0211  
 FAX: (051) 8245 0212  
 WWW.EOS.COM

Marine Transportation ID Observer Pipe Lines

**GENERAL ARRANGEMENT PLAN**  
 BARGE - MICLYN 258  
 EOS-ENG-010

DATE: 1/1/2011

Vessel particulars are believed to be correct but are not guaranteed. Owners reserve the rights to amend the specifications without notification. Particulars are entirely without warranty as to correctness. Interested parties must inspect vessel's certificates, drawings or conduct a physical inspection of vessel.