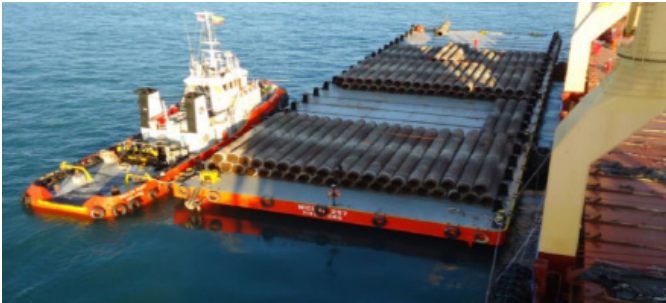


MICLYN 259



FLAT TOP DECK CARGO BARGE



PRINCIPAL PARTICULARS

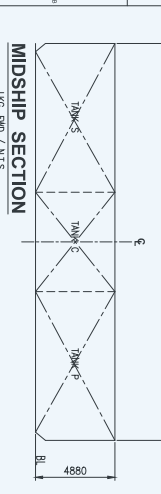
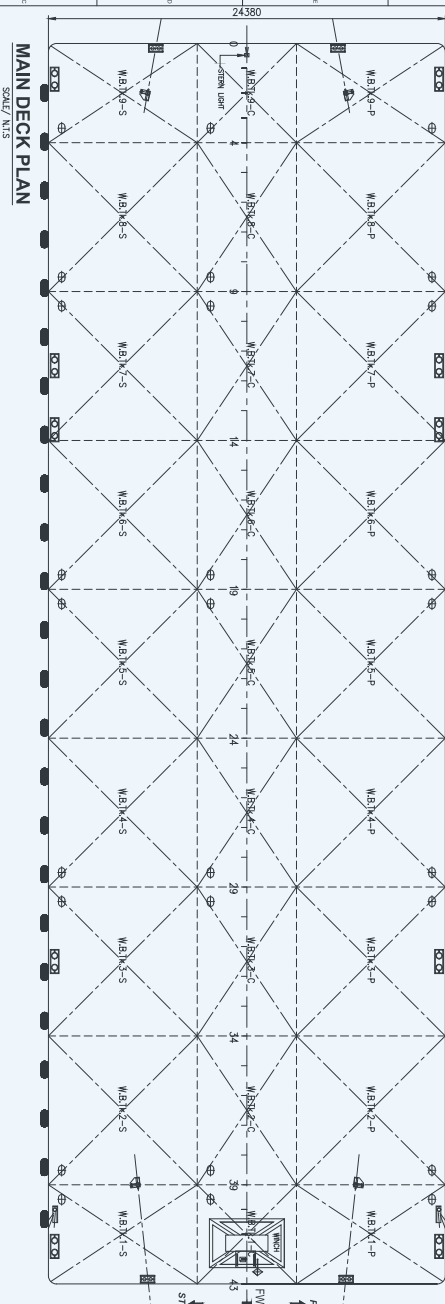
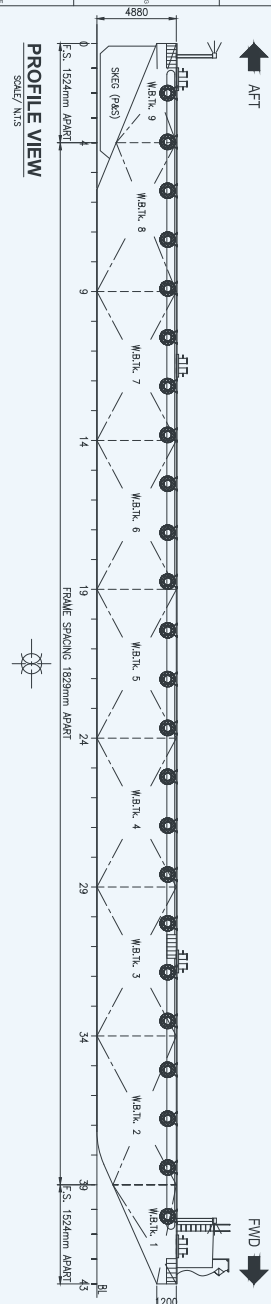
YEAR BUILT	2008
PORT OF REGISTRY	Singapore
OFFICIAL NUMBER	393894
CLASS	Bureau Veritas
LENGTH OVERALL	76.20 m (250 ft)
BREADTH	24.38 m (80 ft)
DEPTH	4.88 m (16 ft)
DRAFT LOADED	3.79 m
DECK STRENGTH	15 T/m ²
GRT / NRT	2,257 T / 677 T
DEADWEIGHT	5,300 T (Approx)
TRANVERSE BULKHEAD	Eight (8)
LONGITUDINAL BULKHEAD	Two (2)

DECK EQUIPMENT

ANCHOR WINCH	1 x anchor winch (Diesel Driven)
ANCHOR	1 x stockless bower anchor
SMIT BRACKETS	4 x smit towing brackets - P&S, fwd and aft
STANCHIONS	24 stanchions (P&S)
NAVIGATION LIGHTS	1 set solar type, P&S at fwd and aft
MOORING BOLLARD	4 sets double mooring bollards each side (deck)
OTHERS	Barge is all welded steel construction with flush main deck and twin skegs

GENERAL ARRANGEMENT PLAN for

" MICLYN 259 "



NOTE :
1. ALL DIMENSIONS ARE IN MM UNLESS INDICATED OTHERWISE.

NO.	DESCRIPTION	DATE	BY	CHECKED	APPROVED
1	ISSUED				
2	REVISION				
3	REVISION				
4	REVISION				
5	REVISION				
6	REVISION				
7	REVISION				
8	REVISION				
9	REVISION				
10	REVISION				

PRINCIPAL PARTICULARS
 LENGTH OVERALL - 76.20 M. (250'-00")
 BREADTH MLD. - 24.38 M. (80'-00")
 DEPTH MLD. - 4.88 M. (16'-00")
 DRAFT MLD. - 3.80 M. (12'-6")
 DECK LOAD - 15.00 TON/M2
 CLASS NOTATION: ABS + A1 TANK BARGE

3 HARBOURPORT PLACE,
 SINGAPORE 099544
 TEL: (65) 6245 5211
 FAX: (65) 6245 5212
 WWW.EOS.COM

Marine Transportation & Offshore Ship Lines

EOS
 EXPRESS OFFSHORE SOLUTIONS

GENERAL ARRANGEMENT PLAN
 BARGE - MICLYN 259
 EOS-ENG-Q012

DATE: 1/1/15

Vessel particulars are believed to be correct but are not guaranteed. Owners reserve the rights to amend the specifications without notification. Particulars are entirely without warranty as to correctness. Interested parties must inspect vessel's certificates, drawings or conduct a physical inspection of vessel.