

# EOS 3303



## FLAT-TOP BARGE



### PRINCIPAL PARTICULARS

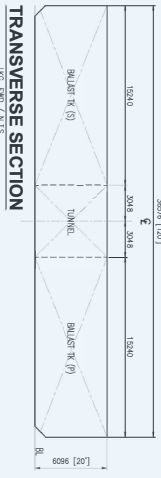
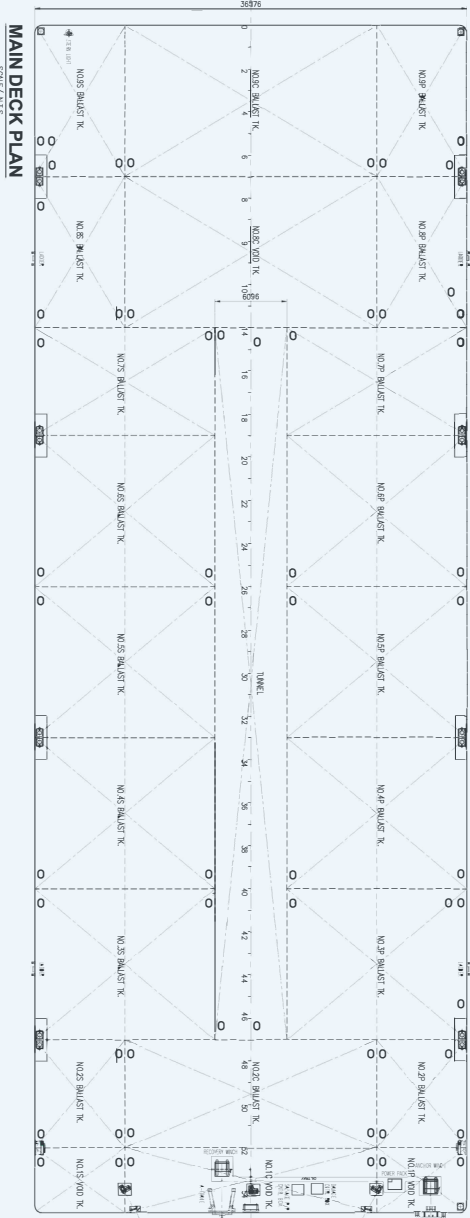
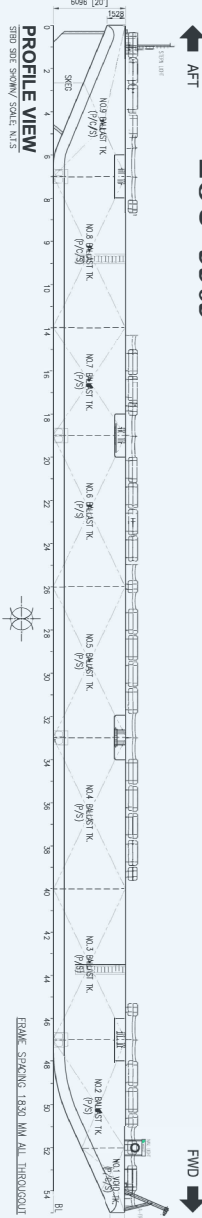
YEAR BUILT	2011
PORT OF REGISTRY	Singapore
CLASS	BV / Barge
LENGTH OVERALL	100.58 m
BREADTH	36.57 m
DEPTH	6.09 m
DRAFT (SUMMER LOADLINE)	5.31 m
DEADWEIGHT	13,412 T
GRT / NRT	5,844 T / 1,753 T
DECK STRENGTH	15 T/m <sup>2</sup>
TRANSVERSE BULKHEAD	Eight (8)
LONGITUDINAL BULKHEAD	2mn + 2swh

### DECK EQUIPMENT

ANCHOR WINCH	1x Hydraulic Winch
ANCHOR	Stockless Anchor, 2280 kg
SMIT BRACKETS	3x Fwd and Aft
STANCHIONS	NA
NAVIGATION LIGHTS	3x Solar powered, Model 301
MOORING BOLLARD	4x Recessed type mooring bollards at Port 4x Recessed type mooring bollards at Aft
RECOVERY WINCH	Fitted Fwd & Aft
A-FRAME	Fitted Fwd & Aft
OTHERS	Tire fenders around the barge

# GENERAL ARRANGEMENT PLAN for

## " EOS 3303 "



NOTE:  
1. ALL DIMENSIONS ARE IN MM UNLESS INDICATED OTHERWISE

NO.	DESCRIPTION	REVISION	DATE
1	ISSUED FOR APPROVAL		
2	ISSUED FOR APPROVAL		
3	ISSUED FOR APPROVAL		
4	ISSUED FOR APPROVAL		
5	ISSUED FOR APPROVAL		
6	ISSUED FOR APPROVAL		
7	ISSUED FOR APPROVAL		

**PRINCIPAL PARTICULARS**

LENGTH OVERALL	-	100.584 M (330'-00")
BREADTH MLD.	-	36.576 M (120'-00")
DEPTH MLD.	-	6.096 M (20'-00")
DRAFT LOADED	-	4.750 M (15'-7")
DECK LOAD	-	15,000 TON/M <sup>2</sup>
CLASS NOTATION:	ABS + A1 TANK BARGE	

**EOS**  
12000 CHILTERN ROAD, SOUTH COAST, QUEENSLAND, AUSTRALIA  
PH: (61) 7 5595 5211  
FAX: (61) 7 5595 5210  
WWW.EOS.COM.AU

12000 CHILTERN ROAD, SOUTH COAST, QUEENSLAND, AUSTRALIA  
PH: (61) 7 5595 5211  
FAX: (61) 7 5595 5210  
WWW.EOS.COM.AU

PROJECT TITLE: **GENERAL ARRANGEMENT PLAN**  
SUBJECT: **BARGE - EOS 3303**  
DRAWING NO: **EOS-ENG04-090**

DATE: 1/1/17

Vessel particulars are believed to be correct but are not guaranteed. Owners reserve the rights to amend the specifications without notification. Particulars are entirely without warranty as to correctness. Interested parties must inspect vessel's certificates, drawings or conduct a physical inspection of vessel.