

# EOS 3306

## FLAT TOP BARGE



### PRINCIPAL PARTICULARS

YEAR BUILT	2012
PORT OF REGISTRY	Australia
CLASS	ABS / + A1 Barge
LENGTH OVERALL	100.65 m
BREADTH	36.60 m
DEPTH	6.10 m
DRAFT (SUMMER LOADLINE)	4.72 m
DEADWEIGHT	13,160 T
GRT / NRT	6,019 T / 1,805 T
DECK STRENGTH	20 T/m <sup>2</sup>
TRANSVERSE BULKHEAD	Seven (7)
LONGITUDINAL BULKHEAD	Three (3)

### DECK EQUIPMENT

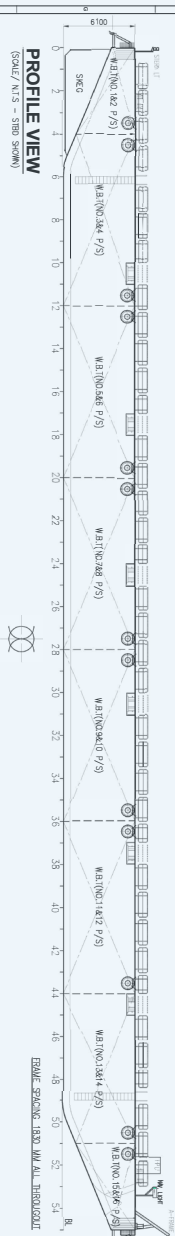
ANCHOR WINCH	1x Hydraulic Winch
ANCHOR	Stockless Anchor, 2100 kg
SMIT BRACKETS	3x Forward
STANCHIONS	NA
NAVIGATION LIGHTS	3x Solar powered, Colreg type
MOORING BOLLARD	6x Recessed type mooring bollards at Port 6x Recessed type mooring bollards at Aft 6 x deck type mooring bollards at Port 6 x deck type mooring bollards at Aft
RECOVERY WINCH	1x Hydraulic Winch at Forward
A-FRAME	1x at Forward
OTHERS	Hand-rail fitted Tire Fenders

# GENERAL ARRANGEMENT PLAN for

## " EOS 3306 "

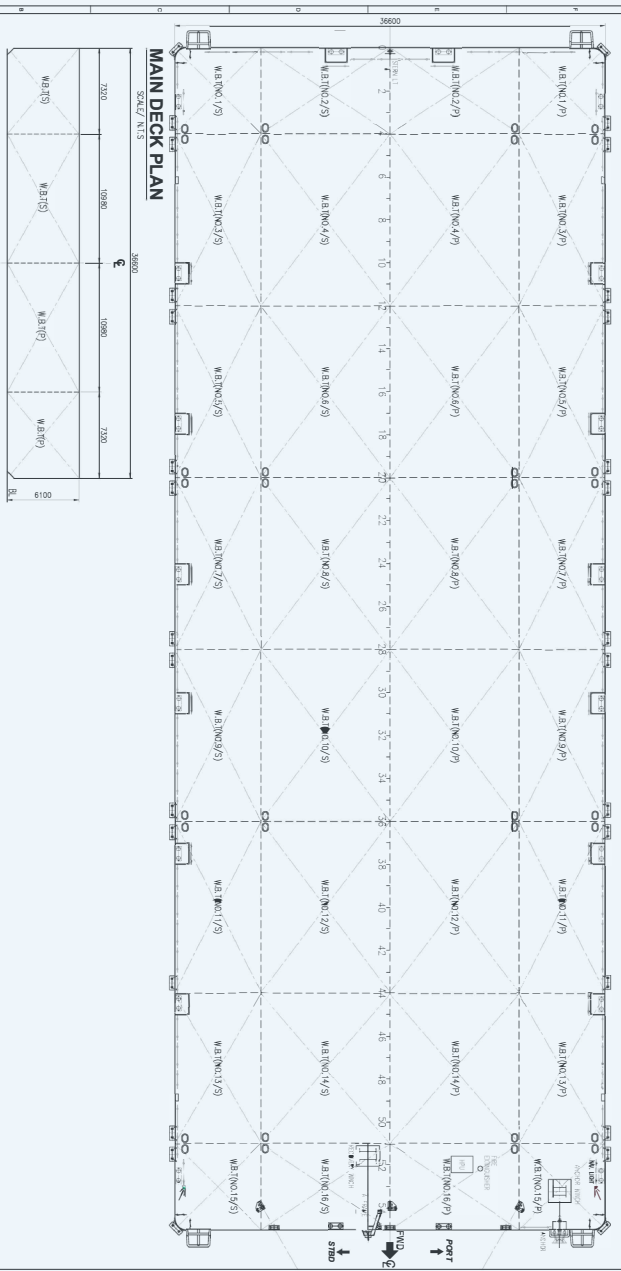
← AFT

FWD →

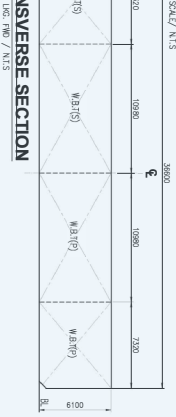


**PRINCIPAL PARTICULARS**

LENGTH OVERALL	- 100.65 M. (330'-00")
BREADTH MLD.	- 36.60 M. (120'-00")
DEPTH MLD.	- 6.10 M. (20'-00")
DRAFT MLD.	- 4.70 M. (15'-05")
DECK LOAD	- 20.00 TON/M <sup>2</sup>
CLASS NOTATION	- ABS + A1 TANK BARGE



### TRANSVERSE SECTION



NOTE: 1. ALL DIMENSIONS ARE IN MM UNLESS SPECIFIED OTHERWISE.

NO.	REVISION	DESCRIPTION	DATE
1	ISSUED	GENERAL ARRANGEMENT PLAN	15/03/2024

NO.	REVISION	DESCRIPTION	DATE
1	ISSUED	GENERAL ARRANGEMENT PLAN	15/03/2024

NO.	REVISION	DESCRIPTION	DATE
1	ISSUED	GENERAL ARRANGEMENT PLAN	15/03/2024

Vessel particulars are believed to be correct but are not guaranteed. Owners reserve the rights to amend the specifications without notification. Particulars are entirely without warranty as to correctness. Interested parties must inspect vessel's certificates, drawings or conduct a physical inspection of vessel.