

M3320

FLAT TOP DECK CARGO BARGE

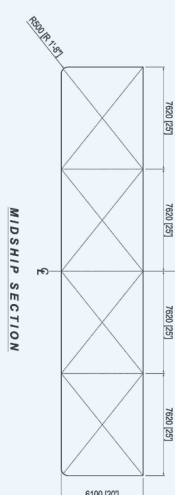
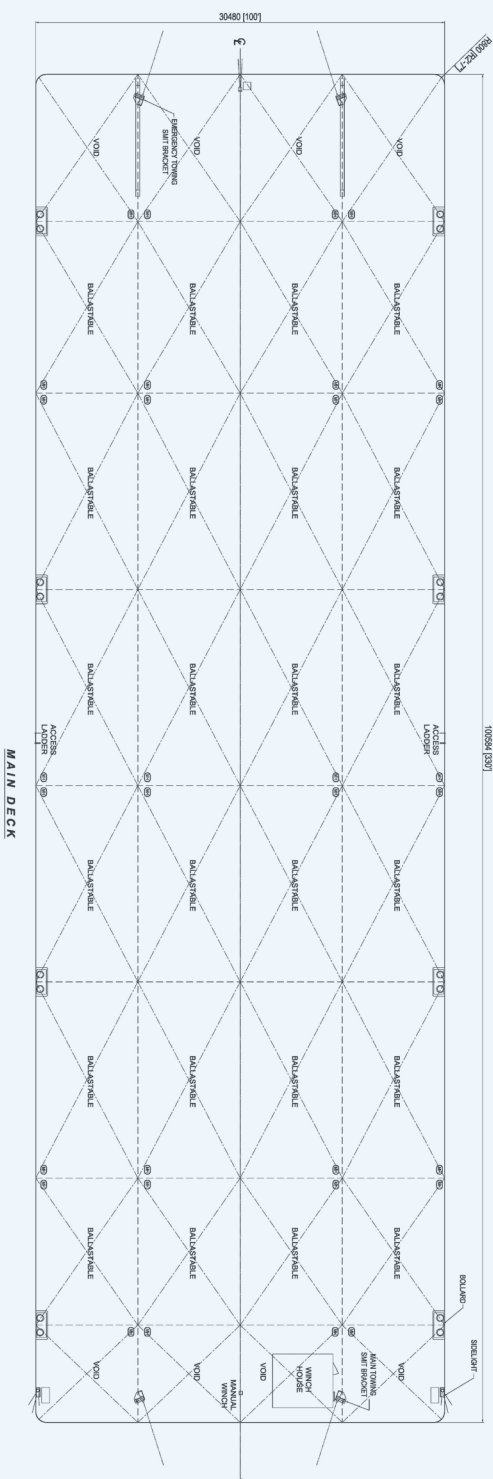
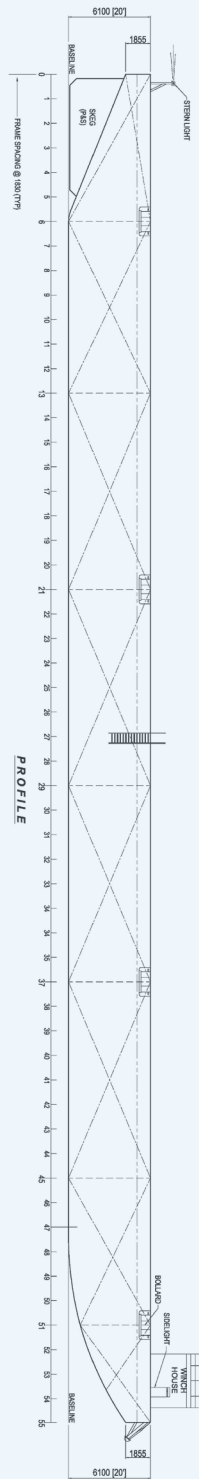


PRINCIPAL PARTICULARS

YEAR BUILT	2008
PORT OF REGISTRY	Singapore / Singapore
OFFICIAL NUMBER	395001
CLASS	Bureau Veritas
LENGTH OVERALL	100.58 m (330 ft)
BREADTH	30.48 m (100 ft)
DEPTH	6.10 m (20 ft)
DRAFT LOADED	4.74 m
DECK STRENGTH	12 T/m ²
GRT / NRT	4,953 T / 1,486 T
DEADWEIGHT	11,475 T
TRANVERSE BULKHEAD	Seven (7)
LONGITUDINAL BULKHEAD	Three (3)

DECK EQUIPMENT

ANCHOR WINCH	1 x 10 t anchor windlass (Diesel Driven)
ANCHOR SMIT BRACKETS	1 x 2,100 kg stockless bower anchor 4 x smit towing brackets - P&S, fwd and aft
STANCHIONS	NIL
NAVIGATION LIGHTS	1 set solar type, P&S at fwd and aft
MOORING BOLLARD	8 x mooring bollards 12" N.B. (recessed)
OTHERS	Barge is all welded steel construction with flush main deck, twin skegs and Swim-ended on stern and stem.



PRINCIPAL DIMENSIONS

LENGTH OVERALL 100.954 M (333'07")
 BREADTH MOULDED 30.460 M (100'07")
 DEPTH MOULDED 6.100 M (20'07")
 DECK SPACING 1.800 M (6'07")
 DECK LOADING 20.000 T/M²

NOTATION
 BY : J HULL, PONTOON, UNRESTRICTED NAVIGATION
GENERAL NOTE
 1. ALL TANK SCANTINGS ARE DESIGNED FOR CARRYING BALLAST
 2. ALL MANHOLES ARE FLUSH TYPE

ISSUE NO.	DATE	DESCRIPTION	BY	CHECK BY
1	02/11/2013			

MICLYN EXPRESS OFFSHORE	
CLIENT:	

TITLE:	OFFSHORE FLAT TOP CARBO BARGE
SHIP NAME:	MICLYN 3320
CONTRACT NO.:	MICINDCARB0310
DESIGNER:	D. HIGHERS
CHECKED:	KON SOON HEE
DATE:	20 NOVEMBER 2011

Vessel particulars are believed to be correct but are not guaranteed. Owners reserve the rights to amend the specifications without notification. Particulars are entirely without warranty as to correctness. Interested parties must inspect vessel's certificates, drawings or conduct a physical inspection of vessel.