

EOS 3306



FLAT TOP BARGE



PRINCIPAL PARTICULARS

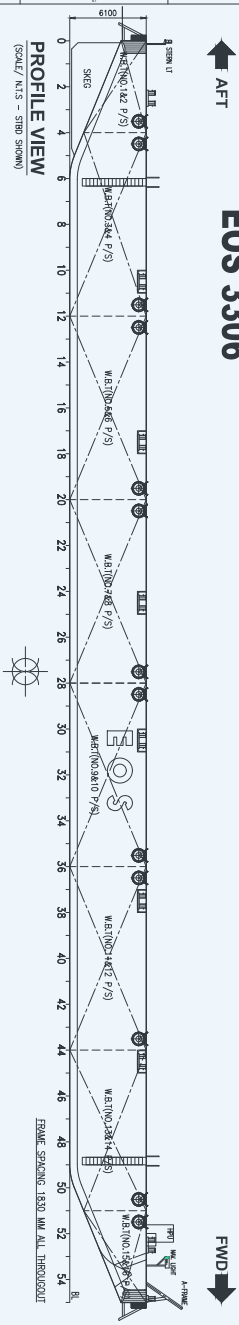
| | |
|-------------------------|-----------------------------|
| YEAR BUILT | 2012 |
| PORT OF REGISTRY | Australia |
| CLASS | Bureau Veritas / + A1 Barge |
| LENGTH OVERALL | 100.65 m |
| BREADTH | 36.60 m |
| DEPTH | 6.10 m |
| DRAFT (SUMMER LOADLINE) | 4.72 m |
| DEADWEIGHT | 13,160 T |
| GRT / NRT | 6,019 T / 1,805 T |
| DECK STRENGTH | 20 T/m ² |
| TRANSVERSE BULKHEAD | Seven (7) |
| LONGITUDINAL BULKHEAD | Three (3) |

DECK EQUIPMENT

| | |
|-------------------|--|
| ANCHOR WINCH | 1x Hydraulic Winch |
| ANCHOR | Stockless Anchor, 2100 kg |
| SMIT BRACKETS | 3x Forward |
| STANCHIONS | NA |
| NAVIGATION LIGHTS | 3x Solar powered, Colreg type |
| MOORING BOLLARD | 6x Recessed type mooring bollards at Port 6x Recessed type mooring bollards at Aft 6 x deck type mooring bollards at Port 6 x deck type mooring bollards at Aft |
| RECOVERY WINCH | 1x Hydraulic Winch at Forward |
| A-FRAME | 1x at Forward |
| OTHERS | Hand-rail fitted Tire Fenders |

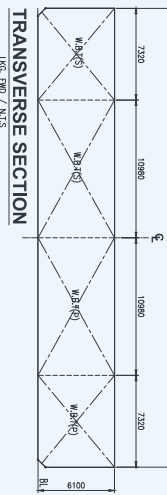
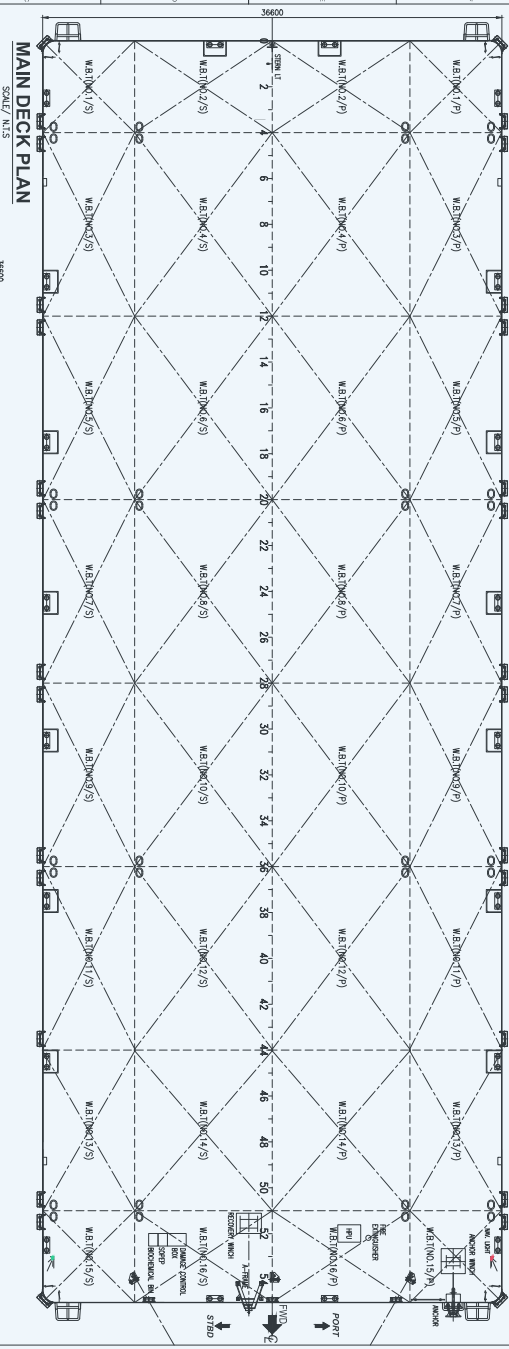
GENERAL ARRANGEMENT PLAN for

"EOS 3306"



PRINCIPAL PARTICULARS

| | |
|-----------------|----------------------------|
| LENGTH OVERALL | - 100.65 M. (330'-00") |
| BREADTH MLD. | - 36.60 M. (120'-00") |
| DEPTH MLD. | - 6.10 M. (20'-00") |
| DRAFT MLD. | - 4.70 M. (15'-05") |
| DECK LOAD | - 20.00 TON/M ² |
| CLASS NOTATION: | ABS + A1 TANK BARGE |



NOTE:
1. ALL DIMENSIONS ARE IN MM UNLESS SPECIFIED OTHERWISE.

| NO. | DESCRIPTION | DATE | BY | CHECKED | APPROVED |
|-----|-------------------------|------|-----|---------|----------|
| 1 | ISSUED FOR CONSTRUCTION | | JBI | CE | |
| 2 | ISSUED FOR CONSTRUCTION | | JBI | CE | |
| 3 | ISSUED FOR CONSTRUCTION | | JBI | CE | |
| 4 | ISSUED FOR CONSTRUCTION | | JBI | CE | |
| 5 | ISSUED FOR CONSTRUCTION | | JBI | CE | |
| 6 | ISSUED FOR CONSTRUCTION | | JBI | CE | |
| 7 | ISSUED FOR CONSTRUCTION | | JBI | CE | |

EOS ENGINEERING SOLUTIONS

1, TRANSPORTATION LINKS
SINGAPORE 098922
11, TRANSPORTATION LINKS
SINGAPORE 098922
TEL: (65) 6545 9211
FAX: (65) 6545 9211

Marine Transportation of Offshore Pipe Lines

GENERAL ARRANGEMENT
BARGE - EOS 3306
EOS-ENG-034

DATE: 1/1/2011

Vessel particulars are believed to be correct but are not guaranteed. Owners reserve the rights to amend the specifications without notification. Particulars are entirely without warranty as to correctness. Interested parties must inspect vessel's certificates, drawings or conduct a physical inspection of vessel.