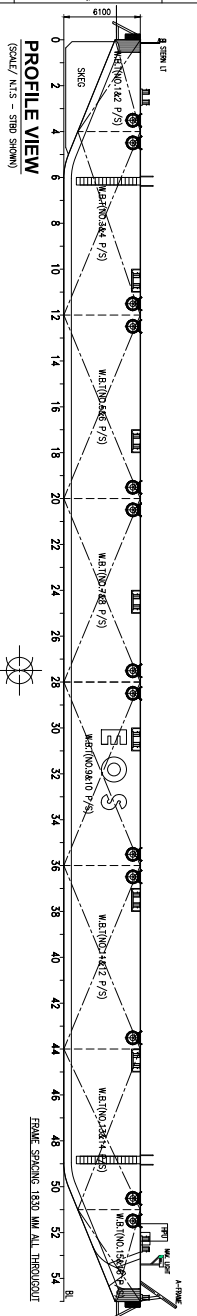


# GENERAL ARRANGEMENT PLAN for

## "EOS 3306"

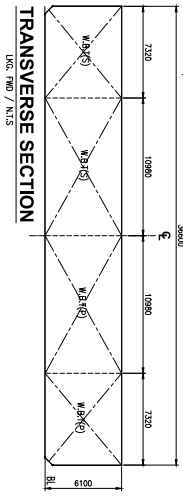
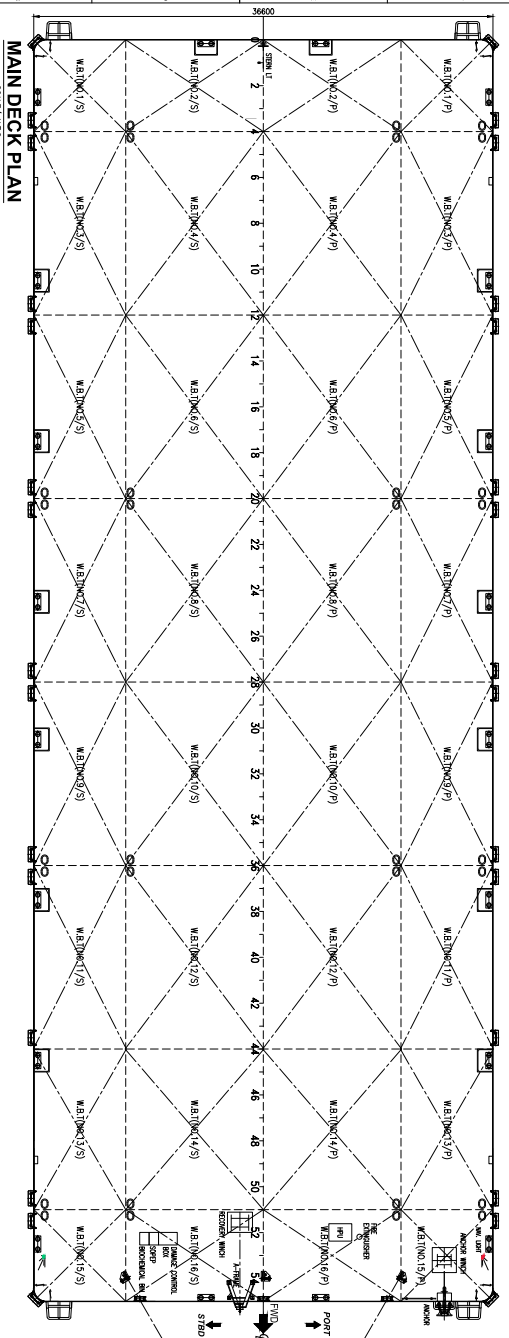
← AFT

FWD →



### PRINCIPAL PARTICULARS

LENGTH OVERALL	- 100.65 M. (330'-00")
BREADTH MLD.	- 36.60 M. (120'-00")
DEPTH MLD.	- 6.10 M. (20'-00")
DRAFT MLD.	- 4.70 M. (15'-05")
DECK LOAD	- 20.00 TON/M <sup>2</sup>
CLASS NOTATION:	ABS + A1 TANK BARGE



NOTE: 1. ALL DIMENSIONS ARE IN MM UNLESS SPECIFIED OTHERWISE.

NO.	DESCRIPTION	UNIT	QTY	REMARKS
1	1.00000	UNIT	1	1.00000
2	2.00000	UNIT	2	2.00000
3	3.00000	UNIT	3	3.00000
4	4.00000	UNIT	4	4.00000
5	5.00000	UNIT	5	5.00000
6	6.00000	UNIT	6	6.00000
7	7.00000	UNIT	7	7.00000
8	8.00000	UNIT	8	8.00000
9	9.00000	UNIT	9	9.00000
10	10.00000	UNIT	10	10.00000
11	11.00000	UNIT	11	11.00000
12	12.00000	UNIT	12	12.00000
13	13.00000	UNIT	13	13.00000
14	14.00000	UNIT	14	14.00000
15	15.00000	UNIT	15	15.00000
16	16.00000	UNIT	16	16.00000
17	17.00000	UNIT	17	17.00000
18	18.00000	UNIT	18	18.00000
19	19.00000	UNIT	19	19.00000
20	20.00000	UNIT	20	20.00000
21	21.00000	UNIT	21	21.00000
22	22.00000	UNIT	22	22.00000
23	23.00000	UNIT	23	23.00000
24	24.00000	UNIT	24	24.00000
25	25.00000	UNIT	25	25.00000
26	26.00000	UNIT	26	26.00000
27	27.00000	UNIT	27	27.00000
28	28.00000	UNIT	28	28.00000
29	29.00000	UNIT	29	29.00000
30	30.00000	UNIT	30	30.00000
31	31.00000	UNIT	31	31.00000
32	32.00000	UNIT	32	32.00000
33	33.00000	UNIT	33	33.00000
34	34.00000	UNIT	34	34.00000
35	35.00000	UNIT	35	35.00000
36	36.00000	UNIT	36	36.00000
37	37.00000	UNIT	37	37.00000
38	38.00000	UNIT	38	38.00000
39	39.00000	UNIT	39	39.00000
40	40.00000	UNIT	40	40.00000
41	41.00000	UNIT	41	41.00000
42	42.00000	UNIT	42	42.00000
43	43.00000	UNIT	43	43.00000
44	44.00000	UNIT	44	44.00000
45	45.00000	UNIT	45	45.00000
46	46.00000	UNIT	46	46.00000
47	47.00000	UNIT	47	47.00000
48	48.00000	UNIT	48	48.00000
49	49.00000	UNIT	49	49.00000
50	50.00000	UNIT	50	50.00000
51	51.00000	UNIT	51	51.00000
52	52.00000	UNIT	52	52.00000
53	53.00000	UNIT	53	53.00000
54	54.00000	UNIT	54	54.00000
55	55.00000	UNIT	55	55.00000
56	56.00000	UNIT	56	56.00000
57	57.00000	UNIT	57	57.00000
58	58.00000	UNIT	58	58.00000
59	59.00000	UNIT	59	59.00000
60	60.00000	UNIT	60	60.00000
61	61.00000	UNIT	61	61.00000
62	62.00000	UNIT	62	62.00000
63	63.00000	UNIT	63	63.00000
64	64.00000	UNIT	64	64.00000
65	65.00000	UNIT	65	65.00000
66	66.00000	UNIT	66	66.00000
67	67.00000	UNIT	67	67.00000
68	68.00000	UNIT	68	68.00000
69	69.00000	UNIT	69	69.00000
70	70.00000	UNIT	70	70.00000
71	71.00000	UNIT	71	71.00000
72	72.00000	UNIT	72	72.00000
73	73.00000	UNIT	73	73.00000
74	74.00000	UNIT	74	74.00000
75	75.00000	UNIT	75	75.00000
76	76.00000	UNIT	76	76.00000
77	77.00000	UNIT	77	77.00000
78	78.00000	UNIT	78	78.00000
79	79.00000	UNIT	79	79.00000
80	80.00000	UNIT	80	80.00000
81	81.00000	UNIT	81	81.00000
82	82.00000	UNIT	82	82.00000
83	83.00000	UNIT	83	83.00000
84	84.00000	UNIT	84	84.00000
85	85.00000	UNIT	85	85.00000
86	86.00000	UNIT	86	86.00000
87	87.00000	UNIT	87	87.00000
88	88.00000	UNIT	88	88.00000
89	89.00000	UNIT	89	89.00000
90	90.00000	UNIT	90	90.00000
91	91.00000	UNIT	91	91.00000
92	92.00000	UNIT	92	92.00000
93	93.00000	UNIT	93	93.00000
94	94.00000	UNIT	94	94.00000
95	95.00000	UNIT	95	95.00000
96	96.00000	UNIT	96	96.00000
97	97.00000	UNIT	97	97.00000
98	98.00000	UNIT	98	98.00000
99	99.00000	UNIT	99	99.00000
100	100.00000	UNIT	100	100.00000

**EOS** ENGINEERING

Marine Transportation of Offshore Pipe Lines

**GENERAL ARRANGEMENT**  
**BARGE - EOS 3306**

EOS-ENG-0304

1. EMBASSY DRIVE  
2840-115 STREET  
SUITE 200  
VANCOUVER, BC V6L 2K1  
CANADA  
TEL: (604) 584-8211  
FAX: (604) 584-8211