

M3320

FLAT TOP DECK CARGO BARGE

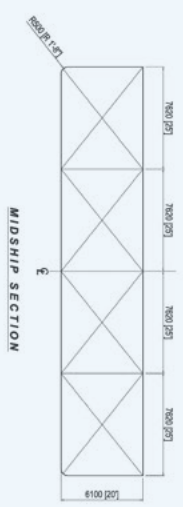
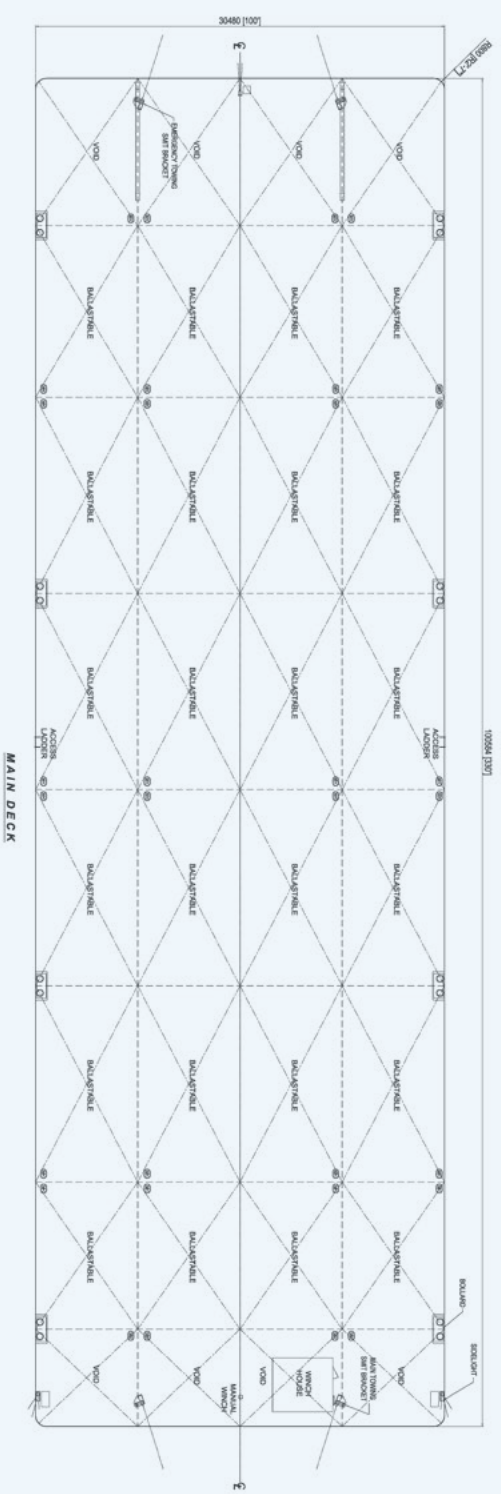
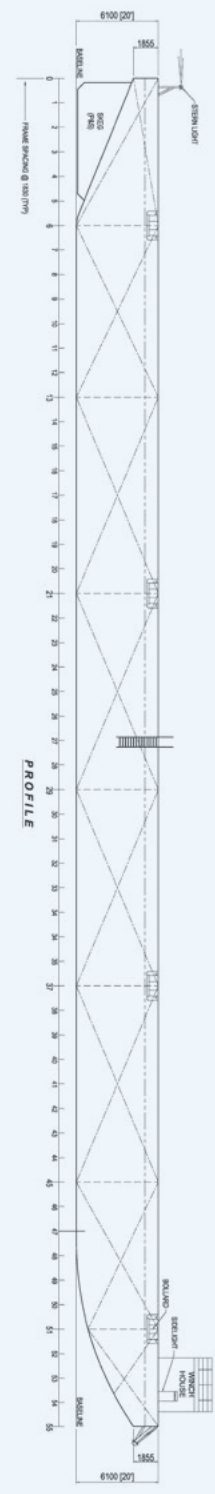


PRINCIPAL PARTICULARS

YEAR BUILT	2008
PORT OF REGISTRY	Singapore / Singapore
OFFICIAL NUMBER	395001
CLASS	Bureau Veritas
LENGTH OVERALL	100.58 m (330 ft)
BREADTH	30.48 m (100 ft)
DEPTH	6.10 m (20 ft)
DRAFT LOADED	4.74 m
DECK STRENGTH	20 T/m ²
GRT / NRT	4,953 T / 1,486 T
DEADWEIGHT	11,475 T
TRANVERSE BULKHEAD	Seven (7)
LONGITUDINAL BULKHEAD	Three (3)

DECK EQUIPMENT

ANCHOR WINCH	1 x 10 t anchor windlass (Diesel Driven)
ANCHOR	1 x 2,100 kg stockless bower anchor
SMIT BRACKETS	4 x smit towing brackets - fwd
STANCHIONS	NIL
NAVIGATION LIGHTS	1 set solar type, P&S at fwd and aft
MOORING BOLLARD	8 x mooring bollards 12" N.B. (recessed)
OTHERS	Barge is all welded steel construction with flush main deck, twin skegs and Swim-ended on stern and stem.



PRINCIPAL DIMENSIONS

LENGTH OVERALL	100.504 M (330'07")
BREADTH MOULDED	30.460 M (100'07")
DEPTH MOULDED	6.100 M (20'07")
FRAME SPACING	1.800 M (6'07")
DECK LOADING	20 000 THW

NOTATION
 BY : HULL, PONTOON, UNRESTRICTED NAVIGATION
GENERAL NOTE
 1. ALL TANK SCANTINGS ARE DESIGNED FOR CARRYING BALLAST
 2. ALL MANHOLES ARE FLUSH TYPE

UPDATE APPROPRIATE	DESCRIPTION	REV	DATE	BY	DATE
1	1	2021	18	5.1.2023	

MICLYN EXPRESS OFFSHORE	
CLIENT:	MICLYN EXPRESS OFFSHORE
TITLE:	OFFSHORE FLAT TOP CARDO BARGE
SHIP NAME:	MICLYN 3220
CONTRACT NO.:	MEG-2020-0000000000
DESIGN NO.:	01/0001/00
CONTRACTOR:	MEG
DESIGNER:	MEG
DATE:	20 NOVEMBER 2021

Vessel particulars are believed to be correct but are not guaranteed. Owners reserve the rights to amend the specifications without notification. Particulars are entirely without warranty as to correctness. Interested parties must inspect vessel's certificates, drawings or conduct a physical inspection of vessel.